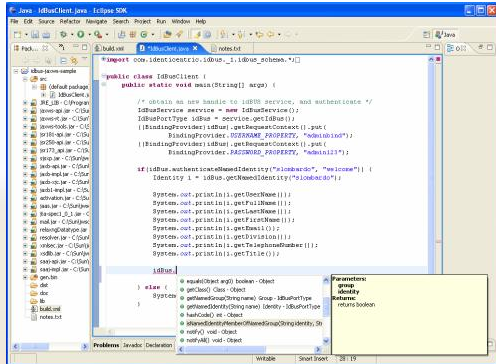
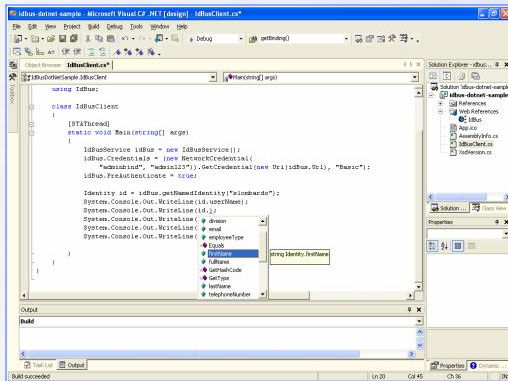


Identity Management. Simplified.

idententric is proud to introduce **idBUS** - the industry's first web service based identity integration platform designed to simplify and accelerate application adoption using SOA patterns. idBUS exposes a straightforward set of common identity services with 100% interoperability between Java and .NET clients. idBUS was developed from the ground up using open standards, and is designed to leverage existing identity management infrastructure and technology.



- ◆ Accelerate adoption - drastically reduce the resources and costs required for each application integration
- ◆ Cut integration time by up to 70%, authored code by 75% – 95% for common requirements
- ◆ Develop economy of scale - maximize effectiveness and return on identity management investments (ROI)



- ◆ Makes identity services simple and accessible for developers and integration teams
- ◆ idBUS compliments current investments in LDAP Directory services, Web SSO, provisioning, and metadirectory
- ◆ Built on industry standards including SOAP, WSDL, WS-Security, XML Schema, JAAS, etc.

Identity management involves almost every aspect of a user's life-cycle within an enterprise environment. This vast scope provides a tremendous potential for savings. Many business cases have been built around the economy of scale possible through the standardization of identity platform, process, and policy.

Unfortunately, the complexity of identity integration has placed a huge burden on developers, architects, support teams and management. For many organizations this complexity has prevented large-scale adoption of common identity platforms and hindered return on investments in identity management technology.

idBUS simplifies identity management integration. It works alongside existing identity infrastructure to provide a core framework of services for rapid identity enablement. idBUS frees integration teams from the need to understand complex technologies like LDAP, schema, token based authentication systems, and provisioning services. Likewise it provides an easily supported service interface that reduces long term costs for infrastructure providers. By accelerating integration, idBUS facilitates the widespread adoption that makes identity management truly effective.

Key Platform Features

- ◆ Ease of integration – sensible service names, short learning curve, named properties, and early binding interfaces using native classes and methods
- ◆ 100% Java / .NET interoperability - full tooling support for proxy/stub generation with existing web service tools. All code required to communicate with services is automatically generated.
- ◆ Provides a durable service contract between consumers and services including versioned, extensible XML schema
- ◆ Fully modular system, configurable service chain, support for custom plug-ins
- ◆ Client authentication using WS-Security or HTTP basic
- ◆ Pluggable authentication modules and selective authorization for service invocation, data access, and data modification using JAAS
- ◆ Horizontally scalable architecture designed to integrate with other enterprise systems and services
- ◆ Platform independence - runs on all major operating systems with a Java Virtual Machine. Deploys on most J2EE application services as a WAR file.

www.idententric.com

Toll Free: +1 (866) 938-3843
Tel: +1 (908) 762-2125

Fax: +1 (908) 762-2125
E-mail: info@idententric.com